



UHC-P 2-slot



UHC-P Narrow



UHC-P 4-slot

UHC-P

Installation, Operation Manual

Covers Palm and Symbol-brand PDA's
2,4-Slot and Narrow Models

Software to operate a UHC-P is available for Palm OS and Symbol-brand Windows Pocket PC-based PDA's. Not all PDA's, however, will communicate with the cabinet. The Palm Zire 22, Tungsten E2 and the Symbol brand Pocket PC-based PDA's are recommended.



Frymaster, a member of the Commercial Food Equipment Service Association, recommends using CFESA Certified Technicians.

* 8196002 *

24-Hour Service Hotline 1-800-551-8633
Email: service@frymaster.com

Price: \$6.00
819-6002
MAR 09

NOTICE

IF, DURING THE WARRANTY PERIOD, THE CUSTOMER USES A PART FOR THIS ENODIS EQUIPMENT OTHER THAN AN UNMODIFIED NEW OR RECYCLED PART PURCHASED DIRECTLY FROM FRYMASTER/DEAN, OR ANY OF ITS AUTHORIZED SERVICE CENTERS, AND/OR THE PART BEING USED IS MODIFIED FROM ITS ORIGINAL CONFIGURATION, THIS WARRANTY WILL BE VOID. FURTHER, FRYMASTER/DEAN AND ITS AFFILIATES WILL NOT BE LIABLE FOR ANY CLAIMS, DAMAGES OR EXPENSES INCURRED BY THE CUSTOMER WHICH ARISE DIRECTLY OR INDIRECTLY, IN WHOLE OR IN PART, DUE TO THE INSTALLATION OF ANY MODIFIED PART AND/OR PART RECEIVED FROM AN UNAUTHORIZED SERVICE CENTER.

THE UHC-P IS NOT SUITABLE FOR OUTDOOR USE. WHEN OPERATING THIS UNIT, IT MUST BE PLACED ON A HORIZONTAL SURFACE.

THE UHC-P IS NOT SUITABLE FOR INSTALLATION IN AN AREA WHERE A WATER JET CAN BE USED. THIS APPLIANCE MUST NOT BE CLEANED WITH A WATER JET.

FOR YOUR SAFETY

DO NOT STORE OR USE GASOLINE OR OTHER FLAMMABLE VAPORS AND LIQUIDS IN THE VICINITY OF THIS OR ANY OTHER APPLIANCE.

DO NOT OPERATE OR SERVICE THE UHC-P WITHOUT FIRST READING THIS MANUAL.

DO NOT OPERATE THE UHC-P UNLESS IT HAS BEEN PROPERLY INSTALLED AND CHECKED.

DO NOT OPERATE THE UHC-P UNLESS ALL SERVICE AND ACCESS PANELS ARE IN PLACE AND PROPERLY SECURED.

DO NOT ATTEMPT TO REPAIR OR REPLACE ANY COMPONENT OF THE UHC-P UNLESS ALL POWER TO THE UNIT HAS BEEN DISCONNECTED.

USE CAUTION WHEN SETTING UP, OPERATING, OR CLEANING THE UHC-P TO AVOID CONTACT WITH HEATED SURFACES.

Table of Contents



| | |
|--|-------------|
| Installation, Warranty, Parts | 1-1 |
| Power Up | 2-1 |
| Operational Overview | 3-1 |
| Programming Overview | 3-4 |
| Programming | 4-1 |
| Changing from 4 to 2-Slot Operation | 4-2 |
| Moving Products from Food Library to Menus | 4-2 |
| Setting up Cabinet on Palm | 4-2 |
| Entering Passwords/ Menu Items | 5-1 |
| Configuring Presets/Saving Cabinets | 6-1 |
| Loading Presets | 6-2 |
| Language/Temperature Display | 7-1 |
| Uploading Cabinet Configurations and Daily Activity to Palm | 8-1 |
| Acquiring, Loading Software for the Palm | 9-1 |
| Checking Palm Operating System Version Number | 9-1 |
| Downloading UHC-P Software from Internet | 9-2 |
| Loading Software on Palm | 9-3 |
| Beaming Software between Palms | 9-6 |
| Acquiring, Loading Software for the Symbol | 10-1 |
| Food Item Default Settings | 11-1 |
| Cleaning and Preventive Maintenance | 11-2 |
| Typical Setups | 11-6 |

1 Universal Holding Cabinet

The Frymaster Universal Holding Cabinet-P (UHC-P) developed and manufactured exclusively for McDonald's, is a short-term holding device to extend the freshness of a wide variety of cooked products. The UHC-P meets all McDonald's standards for safety, efficiency, and cleanliness.

1.1 Warranty Statement

- A. Frymaster L.L.C. makes the following limited warranties to the original purchaser only for this equipment and replacement parts:

1.1.1 Warranty Provisions – Universal Holding Cabinet

- A. Frymaster L.L.C. warrants all components against defects in material and workmanship for a period of two years.
- B. All parts, with the exception of fuses, are warranted for two years after installation date of cabinet
- C. If any parts, except fuses, become defective during the first two years after installation date, Frymaster will also pay straight-time labor costs to replace the part, plus up to 100 miles/160 km of travel (50 miles/80 km each way).

1.1.2 Parts Return

- A. All defective in-warranty parts must be returned to a Frymaster Authorized Factory Service Center within 60 days for credit. After 60 days, no credit will be allowed.

1.2.3 Warranty Exclusions

- This warranty does not cover equipment which has been damaged due to misuse, abuse, alteration, or accident such as:
- Improper or unauthorized repair;
- Failure to follow proper installation instructions and/or scheduled maintenance procedures as prescribed in your MRC cards;
- Improper maintenance;
- Damage in shipment;
- Abnormal use;
- Removal, alteration, or obliteration of the rating plate;

This warranty also does not cover:

- Transportation or travel over 100 miles/160 km (50 miles/80 km each way), or travel time over two hours;
- Overtime or holiday charges;
- Consequential damages (the cost of repairing or replacing other property that is damaged), loss of time, profits, use or any other incidental damages of any kind.

UHC-P

There are no implied warranties or merchantability or fitness for any particular use of purpose.

For international warranty, the above procedures apply, except that the customer is responsible for freight and duty charges.

PARTS ORDERING AND SERVICE INFORMATION

Parts orders may be placed directly with your local Frymaster Factory Authorized Service Center (FASC)/Distributor. A list of Frymaster FASC/Distributors was included with the cabinet when shipped from the factory. If you do not have access to this list, please contact the Frymaster Service Department at 1-800-24-FRYER or 1-318-865-1711.

Please note that orders for wire/plastic trays, stacking kits, carts and casters should be placed with your local Kitchen Equipment Supplier (KES). Frymaster does not supply these accessory items.

To speed up your order, the following information is required:

Model Number _____
Serial Number _____
Voltage _____
Item Part Number _____
Quantity Needed _____

Service may be obtained by contacting your local Frymaster Authorized Service Center/Distributor. Service information may be obtained by calling the Frymaster Service Department. The following information will be needed in order to assist you quickly and efficiently:

Model Number _____
Serial Number _____
Nature of the
Problem _____

Also any other information which may be helpful in solving your service problem.

RETAIN AND STORE THIS MANUAL IN A SAFE PLACE FOR FUTURE USE.

1.2 Product Trays

There are 3 product tray sizes. See Appendices A and C for specific product volumes and recommended holding sizes and times. Use the tray that is designed for the specific product described below:

- A. **1/3-size plastic tray** – Holds meat and egg products that are grilled (hamburger patties, bacon, eggs, sausage, etc.) There are two important procedures to remember when storing grilled products:
- The product should not be drained when picked up from the grill.
 - The product is stacked when placed in the proper tray. 10-1 and sausage patties can be stacked up to six high. Eggs (except scrambled), grilled chicken and 4-1 patties can be stacked up to three high.
- B. **1/2-size wire tray** – holds fried products (McNuggets, McChicken, Filet-O-Fish, etc.) Remember this important procedure when storing fried products:
- Fried products are to be placed on the wire rack. The rack should be placed on a crumb tray. No tray liners are required for these trays.
- C. **Full-size plastic tray** – holds baked products (biscuits, muffins, etc.) Follow these procedures for baked products:
- After the biscuits have been removed from the biscuit oven, remove the wrapper and open the cardboard box.
 - Put a tray liner in the tray and slide the biscuits onto the liner. The biscuit trays can hold up to 30 frozen biscuits, 20 scratch biscuits or 20 muffins.

Important Operational Tips

When placing a tray into the cabinet, make sure the slot line on the tray handle lines up with the edge of the slot.

Discard cracked or damaged trays.

When removing portions from a tray, slide the tray only as far as needed, then quickly return the tray to the slot line.

UHC-P

1.3 Install Grill Clip

The grill clip is shipped in the accessory package and is designed to hold the 1/3-size grill tray. It attaches to the grill to make transfer from the grill to the UHC faster and safer.

- Position the front of the grill clip under the lip of the grill.
- Lower the back of the clip until the grooves rest over the grill bar. The grill clip should firmly seat on the front of the grill. If the clip doesn't fit snugly, simply loosen the four nuts under the clip and slide it in or out as needed to tighten against the bar. Tighten the nuts after the clip is properly adjusted.



The grill clip attaches to the grill and holds grilled product in a UHC-P tray, making transfer to the holding cabinet easier.

1.4 Installation of 4" Legs

CAUTION

Use caution when handling the cabinet or tilting the unit to/from the floor to install the legs. Maneuvering the cabinet should be accomplished by at least two people.

- A. Carefully place the Universal Holding Cabinet on its right side (direction is determined with you facing the front of the unit), exposing the base of the cabinet.
- B. Mount the leg pads to the bottom of the base using the 16- $\frac{1}{4}$ "-20 x $\frac{1}{2}$ " long screws and lockwashers provided.
- C. Screw the leg into the mounted leg pad until fully tight.
- D. Carefully turn the UHC upright until the unit stands on its legs. Perform Step 2, *Power Up*.

IF THE UHC-P IS INSTALLED WITH THE COUNTERTOP OPTION, ENSURE THE AREA WHERE THE UHC-P BASE AND COUNTERTOP MEET IS PROPERLY SEALED WITH A FOOD GRADE TYPE SEALANT.

2 Power Up

ALL ELECTRICALLY OPERATED APPLIANCES MUST BE ELECTRICALLY GROUNDED IN ACCORDANCE WITH LOCAL CODES, OR IN THE ABSENCE OF LOCAL CODES, WITH NATIONAL ELECTRIC CODE, ANSI/NFPA NO. 70-1990.

A. Power Requirements:

- Voltage – 208/240 VAC
- 2620 Watts @ 208V – 3420 Watts @ 240V
- Frequency – 50/60 Hertz
- Single Phase
- 20 amp Service

THIS APPLIANCE IS EQUIPPED WITH A THREE-PRONG GROUNDING PLUG FOR YOUR PROTECTION AGAINST SHOCK HAZARD AND MUST BE PLUGGED INTO A PROPERLY GROUNDED THREE-PRONG RECEPTACLE. DO NOT CUT OR REMOVE THE GROUNDING PRONG FROM THIS PLUG.

ALL UNITS (CORD CONNECTED OR PERMANENTLY CONNECTED) SHOULD BE CONNECTED TO A GROUNDED POWER SUPPLY SYSTEM.

- B. Plug the Universal Holding Cabinet-P into the power source.
- C. Place the power switch in the ON position. All control displays will illuminate green approximately 2 seconds after the power switch is activated.
- D. Monitor the temperature of the slots. The time it takes the slot(s) to heat from ambient (room) temperature to a 155°F (68°C) setpoint should be approximately 15 minutes. It should take approximately 25 minutes to reach a 200°F (93°C) setpoint. If setpoint is not consistently achieved within these limits, call your local Factory Authorized Service Center for repair.

UHC-P

3 Operational Overview

The Universal Holding Cabinet-P (UHC-P) has four slots, which hold up to three trays of product or two slots, which hold three trays each. The narrow model has four slots, which hold one tray each. Each slot has a controller, which indicates product and holding time for each tray position.



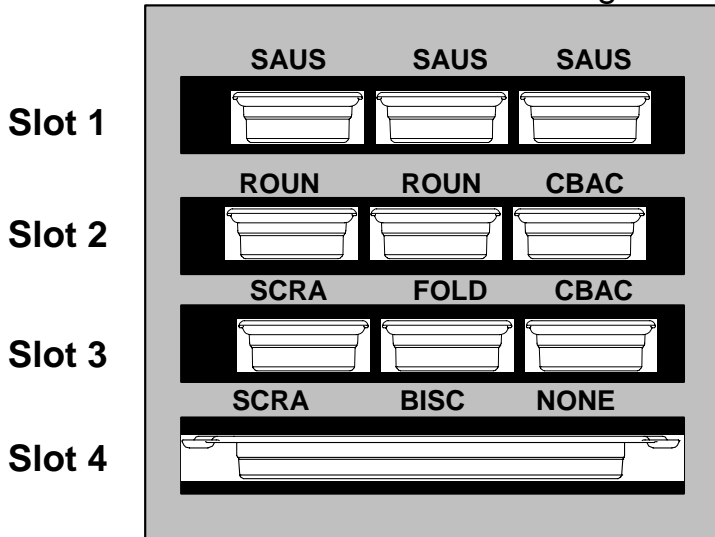
Figure 1

UHC-P

Breakfast Setup

Default Settings

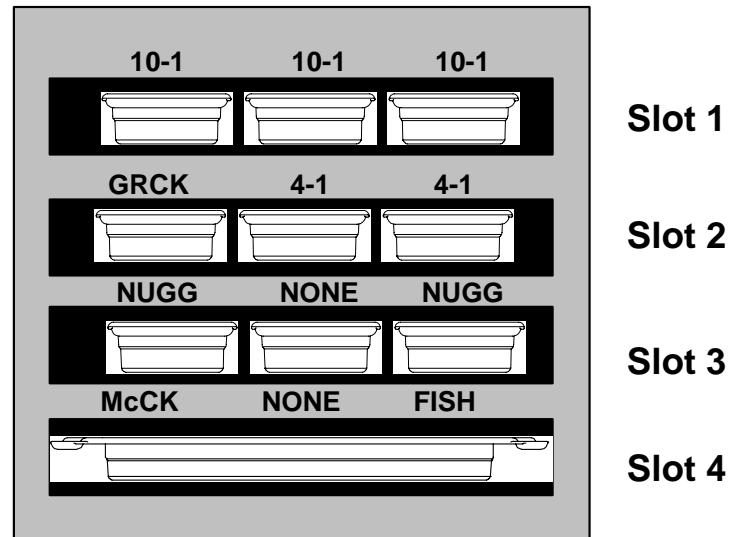
Left Center Right



Lunch Setup

Default Settings

Left Center Right



The UHC-P is ready for operation out of the box, with the slots set for the breakfast and lunch menus illustrated in the graphic above.

3.1 Cabinet Operation

1. Turn the power switch ON.
2. The displays will light and show LOW TEMP.
3. Press the Menu key to scroll to the desired menu, release the key and immediately press the Temperature key. The chosen menu is locked in. **NOTE:** All temperature and hold-time settings are to McDonald's specifications. Menu or other setting changes require a Personal Digital Assistant (PDA), a hand-held computer and related software. Programming the cabinet with a PDA is covered in Chapter 4.

3.2 Timer Operation

Press the timer key adjacent to the desired slot. The timer counts down from a preset value. The display alternates between the product name and the remaining hold time. If more than one slot is holding the same product, the location with the least remaining holding time is indicated by a brighter display and illuminated dots.

Stopping the Timer

Press the timer key next to the slot position to turn a timer off. The timer stops and the display dims, indicating inactivity. The use-first indicator moves to the next appropriate slot.

3.3 Cook More Prompts

The Cook More prompt sounds at a preset time prior to the expiration of the last tray of a specific product. No acknowledgement is necessary. The three-second audible alarm and the display of **COOK MORE** serve as a reminder to cook more of the needed product.

3.4 Using Clean Mode

Press the Menu key repeatedly until **CLEAN MODE** is displayed on the screen. Release the key and immediately press the Temperature key. Upload Palm will display. (This is a prompt to upload data captured by the cabinet during the day's operation. Instructions for uploading data to the PDA are provided in Chapter 8.) Press the Temperature key again to display **SLOT CLN MODE**. This changes the setpoint for all slots to 125°F (52°C). The display will alternate between **SLOT CLN MODE** and **NOT SAFE YET** until the temperature of the slots reaches 125°F (52°C). The display then dims.

Exit Clean Mode by pressing the Menu key until the desired menu choice appears. Release the key and immediately press the Temperature key; the choice is locked in. This must be done for each slot. The display will show **SLOT TEMP LOW** until it reaches the setpoint for the chosen product.

3.4 Turning Slots OFF

Press the Menu key on a slot until **SLOT OFF** is displayed. Release the key and immediately press the Temperature key; the choice is locked in.

3.5 Temperature Display

Press the Temperature key four times and the temperatures and setpoints will be displayed in this sequence:

- Top plate temperature
- Bottom plate temperature
- Top plate setpoint
- Bottom plate setpoint

NOTE: Narrow model displays only the actual temperature.

3.6 Temperature Alarms

There are five temperature alarms:

- High Temperature
- Low Temperature
- FDA
- Sensor
- Rise Time

UHC-P

If an alarm condition occurs, an audible alarm sounds and the display alternates between the product selection and the alarm message. Timers cannot be started if a slot is displaying an alarm message.

3.6.1 High and Low-Temperature Alarms

If the slot temperature is above or below the limits for the product selected, the display will show `SLOT TEMP HIGH` or `SLOT TEMP LOW`. An alarm will sound. Press a timer key to turn off the audible alarm. The audible alarm does not sound during initial cabinet startup.

3.6.2 Food and Drug Administration (FDA) Alarm

The FDA alarm indicates the slot temperature is below the preset limit to hold a product. An audible alarm sounds and the alarm message reads `TEMP UNDER FDA`. Press a timer key to turn off the audible alarm. The message remains until the slot temperature is within limits. Press the timer key to clear the FDA alarm.

3.6.3 Sensor-Range Alarm

The Sensor Fail alarm indicates a sensor temperature value above or below the 90-250°F (32-121°C) range of the slot. An audible alarm sounds. The displayed message is `SENS ALRM`. Press a timer key to end the audible alarm. Service is required to correct the sensor alarm.

3.6.4 Rise-Time Alarm

A rise-time alarm indicates the slot temperature failed to reach operating temperature within a preset time after start up. The displayed message is `SLOT RISE RATE`. An audible alarm sounds. Press a timer key to turn off the audible alarm. Service is required to correct a rise-time alarm.

3.6.5 Additional Out of Tolerance Displays

`HHH` in the display indicates a sensor error. Service is required.

`LLLL` indicates a sensor error or a slot below 50°F (10°C). Allow the slot to operate for 10 minutes. If `LLLL` remains, call for service.

3.7 Programming Overview

A Palm Pilot loaded with the UHC-P software is available from Frymaster. All programming of the cabinet, except initial default settings, is first entered into a PDA then beamed into the UHC-P. Below is an annotated look at the main UHC-P screens on a Palm Pilot. The appearance of the screen varies with software versions and PDA's*. Programming and use are covered in Section 4-7. PDA software should be loaded onto a computer accessible to the store manager for use in acquiring and loading UHC-P software. Loading and acquiring software are described in Chapters 10, 11. See the PDA manual for a description of its operation.

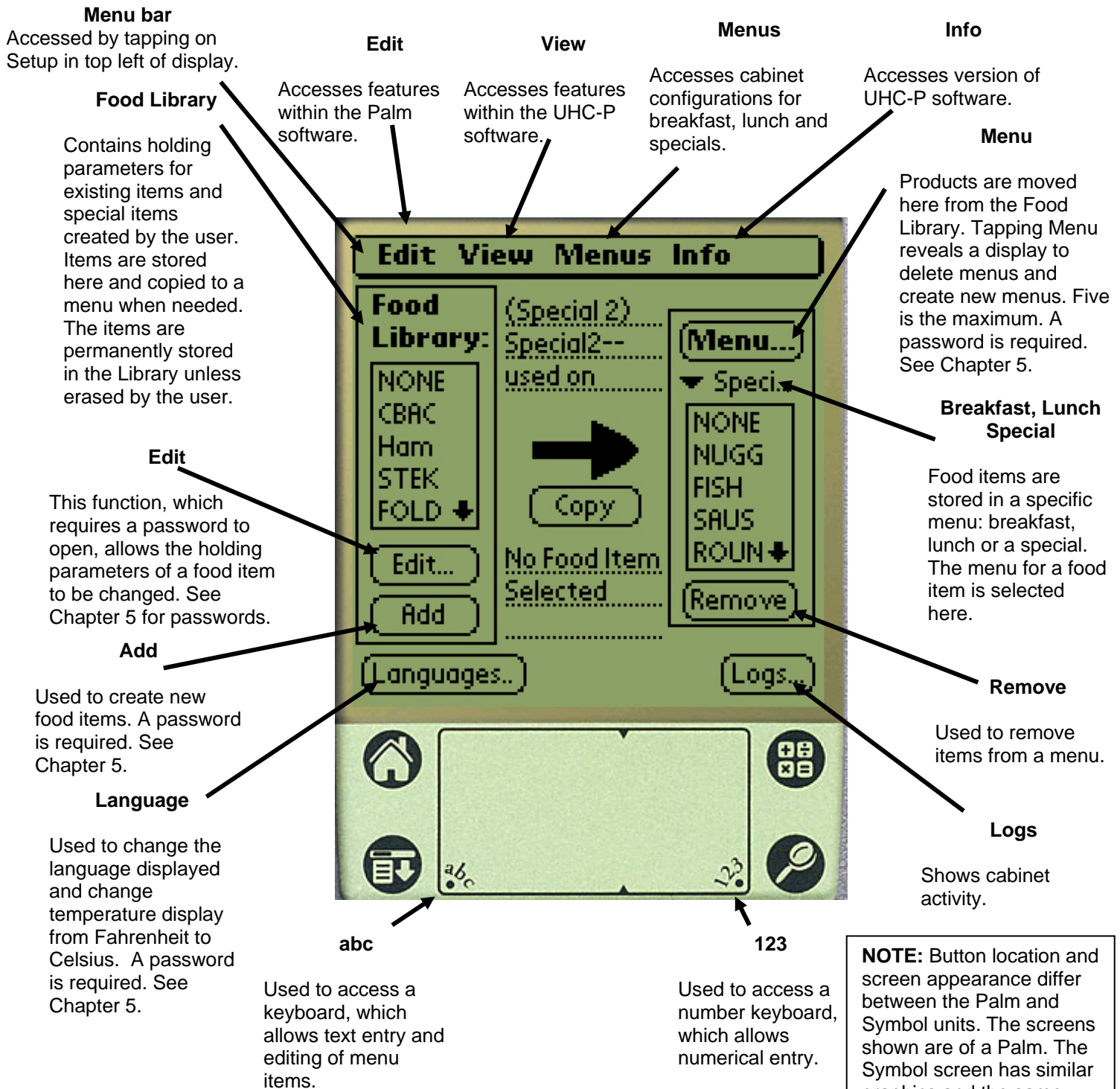


Figure 1
3-5

UHC-P

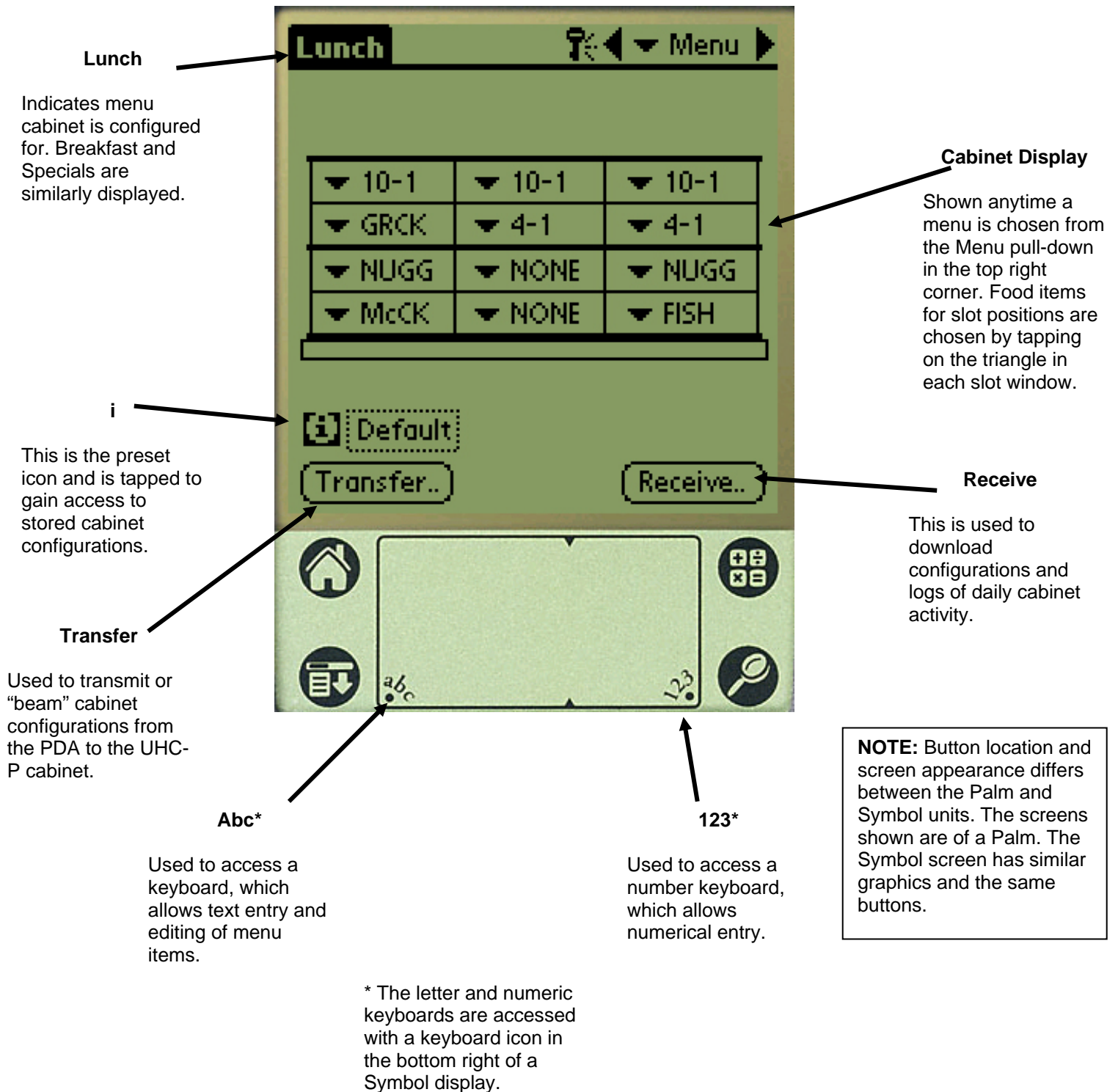


Figure 2

4 Programming the UHC-P



Figure 1: Palm Pilot with UHC-P software displayed.

A PDA with UHC-P software installed must be used to alter or add to the menu items stored in the UHC-P cabinet. A Palm Pilot with the software loaded is available for the UHC-P. Other Palm models can be used, however, they must have version 4.0 or later of the Palm operating system. Software for a Symbol-brand PDA, which runs on a Pocket PC operating system, is also available.



Figure 2

A PDA is not necessary to initially operate the UHC-P. A default menu is loaded at the factory.

A PDA and its UHC-P software, however, make setups for promotional items and special configurations easy to build and repeat. Cabinet activity can be transmitted from the UHC-P to a PDA.

NOTE: Rechargeable PDA's must be recharged frequently. Battery-powered PDA's must have the batteries regularly replaced. Some PDA's will lose user-installed software if left with a dead battery for an extended period.

With the proper security clearance, menu items can be created and edited in the software. **See Figure 1.**

The new items, along with existing products, are stored in the Food Library, where they can be moved to the Menu and beamed into the UHC-P cabinet. The configurations established in a PDA are beamed into the UHC-P cabinet's lens. **See figure 2.**

NOTE: Button location and screen appearance differ between the Palm and Symbol units. The screens shown are of a Palm. The Symbol screen has similar graphics and the same buttons.

4.1 Opening the UHC-P Software



Figure 3: Tap the UHC-P software icon on the Palm or Symbol's program screen.



Figure 4: UHC-P software allows items in the Food Library to be moved into the current menu.

Turn the PDA ON and navigate to the screen holding the program icons.

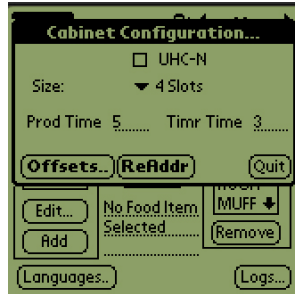
The UHC-P icon shows on the screen. Tap it.

The Setup screen is displayed. **See figure 4.**

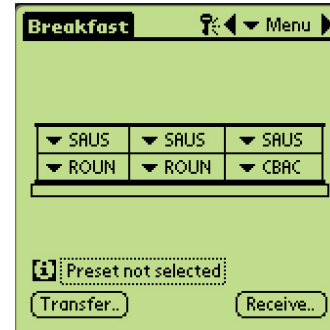
4.2 Setting the UHC-P Software for 2 or 4-Slot Operation



Step 1: Tap the setup icon in the top left corner of the screen to reveal the menu bar and tap View and then choose Cabinet.

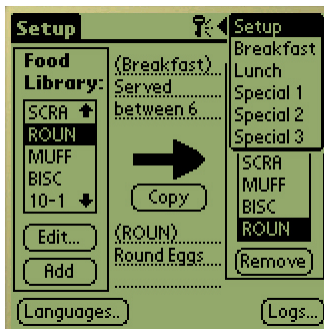


Step 2: In the Cabinet Configuration screen's pull-down menu, set the number of slots the unit has and check the UHC-N box if the cabinet to be programmed is a narrow model. The number of seconds the cabinet displays the product name and the remaining hold time can also be adjusted here in version 2.10 of the software. See figure 3-5 for accessing a keypad for numeric entry.

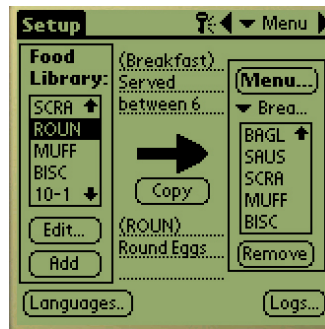


Step 3: Tap quit and the cabinet graphic reflects the change.

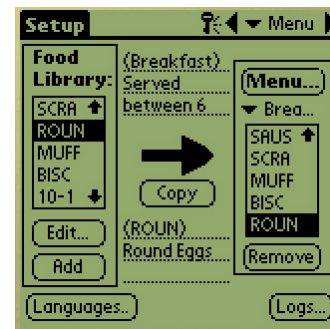
4.3 Moving Products from the Food Library to the Menu



Step 1: NOTE: A password is required to alter the menu. See Chapter 5 for password entry. Tap Menu and a pull-down is displayed. Highlight a menu location by tapping it. In this example Breakfast is chosen. A breakfast item is being moved from the Library to the Breakfast menu. The same procedure is followed for lunch and special menu items.

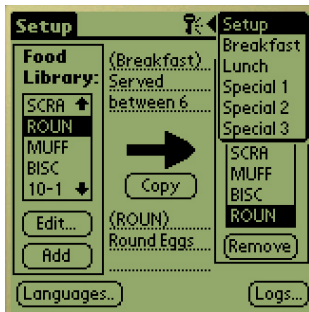


Step 2: Highlight the menu item in the Food Library by tapping on it once.



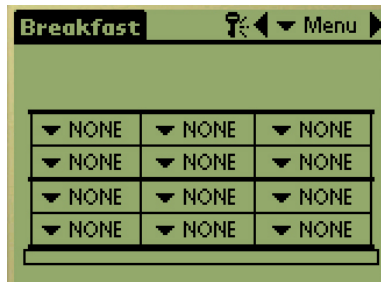
Step 3: Tap the Copy button once and the item is copied into the Menu window and is available for loading into the UHC-P cabinet. The item also remains in the Food Library.

4.4 Setting Up the Cabinet on a Palm Pilot



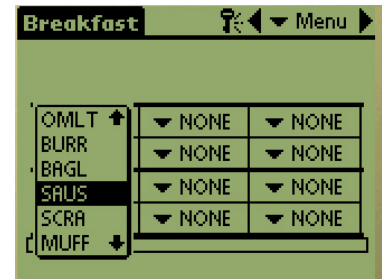
Step 1: Tap Menu in the top right corner. The Setup menu is displayed. Choose Breakfast or another selection by tapping on the word. In this example, a Breakfast menu is configured.

Note: These steps should be repeated to configure the cabinet for each menu. All five of the menu configurations are transferred to the cabinet each time menu changes are beamed into the UHC-P cabinet.

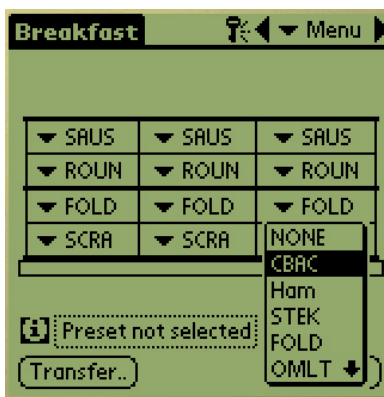


Step 2: A graphic of the UHC-P cabinet is displayed

Note: Graphics used in these instructions reflect the full-size 4-slot cabinet. Programming a 2-slot or narrow cabinet is identical, however, the graphic on the PDA screen, with the changes shown in section 4.2, will reflect the cabinet being programmed.



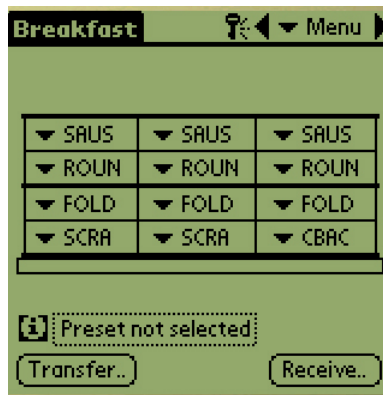
Step 3: Tap on a leftmost slot and from the drop-down menu select a menu item. **Note:** The leftmost slot positions establish the setpoint for that slot. Items with incompatible setpoints cannot be selected for adjacent positions.



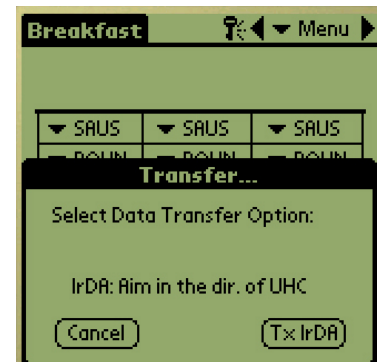
Step 4: Choose a product for each slot. All the products in a slot must have compatible setpoints.

Repeat these steps to configure the cabinet for each menu.

NOTE: All five of the menu configurations are transferred to the cabinet each time menu changes are beamed into the UHC-P cabinet.



Step 5: The cabinet should now be configured for all five menus.



Step 6: Ensure the receiving lens on the front of the UHC-P cabinet is clean. Hold the PDA parallel with the floor and aim it at the lens from no more than one foot away.

Tap the Transfer button.

Tap the TxIrDa button.

The cabinet will beep and the Palm Pilot will display a message, indicating a successful transfer. All five menus established on the Palm are now accessible with the menu key on the UHC-P cabinet.

5 Password Access

5.1 Entering A Password



Figure 1: Entering a password allows new products to be added and existing products to be edited.

Adding, editing or removing items in the Food Library and changing the language or temperature display require a password. Tap the Key icon in the top center of the UHC-P software. **Upper arrow in Figure 1.** On a Symbol device, tap the word **login** in the menu bar. The Security Manager screen appears.

Tap the **abc** or **keyboard** icon on the bottom of the screen. **Show on Palm at left in Figure 1.** Symbol units have a keyboard icon at the bottom right.

Use the keyboard to enter the required password (**manager**) and tap OK.

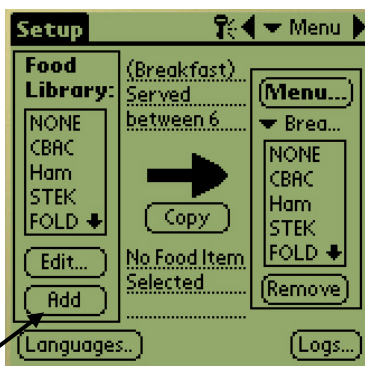
The Security Manager screen reappears with the password in place. Tap OK.

A Current Security screen appears. Click OK.

With the proper password entered, menu items can be entered and edited. The password must be changed back to **cook**, the default setting, to lockout access to the Food Library, language and temperature displays.

Exit the UHC-P software by tapping the House icon on the Palm screen, which will cause it to default to the Cook password setting upon restart.

5.2 Entering A New Product



Step 1: (Enter password as shown in section 5.1.) Menu items are added by clicking the add button in the Food Library window. See arrow.



Step 2: NewO appears highlighted in the Food Library window. With the NewO item highlighted, tap the Edit button.



Step 3: The Edit Food Item menu appears. It allows the product to be named and holding temperatures, times and Cook More prompts to be entered.



Step 4: Tap on the line next to the abbreviated name. Then tap on the keyboard icon* in the corner of the PDA window (see arrow).



Step 5: Use the backspace key to eliminate the NewO text. Tap on the keys to enter an all-capital, 4-letter abbreviated name for the product. Hit Done. Repeat these steps to enter a description.

***NOTE:** In the Symbol PDA, the number and letter keyboards are accessed from the letter keyboard icon in the right corner of the screen.



Step 6: Tap next to the underlined temperature settings and then tap on the number icon in the bottom right of the *PDA display. A numeric keypad is displayed. Use it — just as the keyboard is used in steps 4 and 5 — to enter setpoint temperatures, set hold time, cook more time and countdown lights. The horizontal sliders can also be used to adjust temperatures and times.

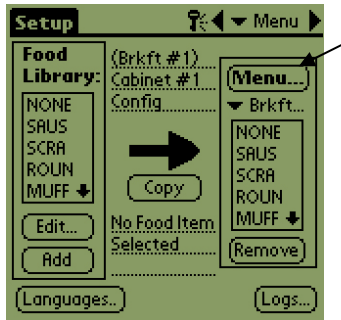


Step 7*: Use the vertical slider on the right side of the screen to access four more options and adjust them for the new product.

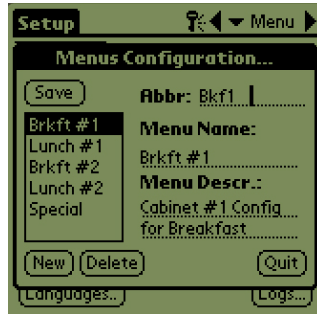
***NOTE:** Holding temperatures, times and other parameters associated with adding products to a menu will be distributed by McDonald's officials.

Tap OK and the new item is stored in the Food Library and can be moved to a menu for transfer to the UHC-P.

5.3 Changing Menu Name/Deleting Menus



Step 1: Go to the menu window by clicking the Menu... button in the right column of the display. See arrow.



Step 2: The Menu Configuration screen is displayed. Highlight a menu to be deleted by tapping on it. Tap the Delete button to eliminate the highlighted menu.

Use the New button to create a new menu. Tap on the Abbr: field and then tap the keyboard icon to access the keyboard to enter a name for the new menu item. Repeat to enter a menu name and description.

Tap the Save button to save the new menu.

NOTE: The new menu will have to be populated by moving items from the food library to the new menu, a process described in section 4.3.

6 Presets



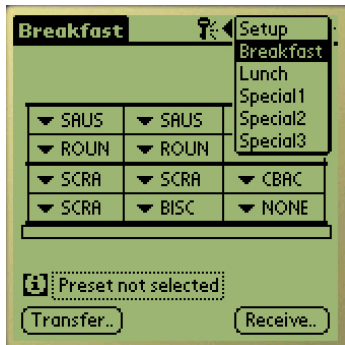
The Preset Manager or Saved Cabinet feature in later software allows cabinet configurations to be loaded and stored permanently in the PDA. These configurations, reflecting daily, weekend and special menu setups of all five of the menus retained in the UHC-P cabinet, can be recalled and beamed into multiple UHC-P cabinets. This feature was enhanced with version 2.10 of the software. Its operation, called Saving Cabinets, is covered in section 6.3.

This feature is useful to retain cabinet configurations for different stores and specials.

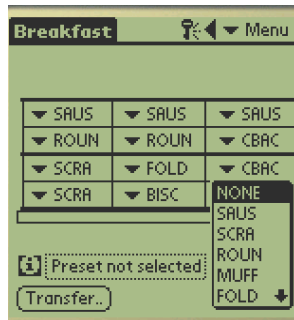
The cabinet configuration displayed on the Palm must be changed when setting up special configurations for saving as Presets. To name and save as a Preset the existing cabinet configurations in your Palm, go to Step 3 below.

Follow the steps below to enter the Preset Manager and create and store cabinet configurations.

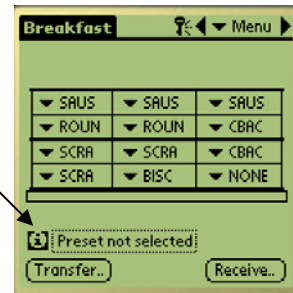
6.1 Configuring Presets (used with pre-2.10 versions of the software)



Step 1: Go to setup and choose a menu. In this example, we have started with Breakfast.



Step 2: Configure the items in the cabinet for that menu, lunch and all special menus you want to store in this preset.



Step 3: Tap on the Preset icon to display the Preset Manager. See arrow.



Step 4: Tap the New button in the bottom left of the Present Manager window.



Step 5: Tap the keyboard icon and use the keyboard to eliminate the New Preset text and enter a new ID and description. Tap Done.



Step 6: Tap the Save button and the configuration entered is stored.

6.2 Loading Presets (used with pre-2.10 versions of the software)

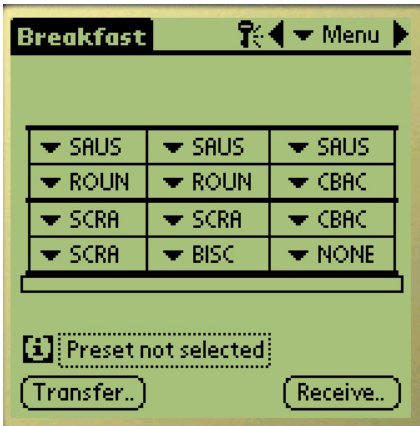
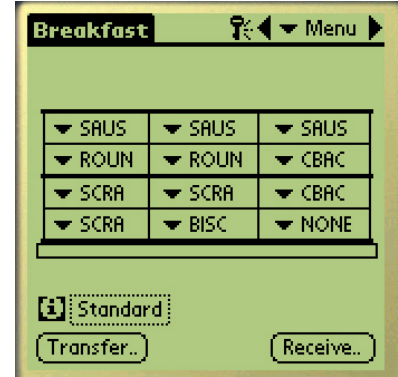


Figure 1: In the menu window, tap the Preset icon.

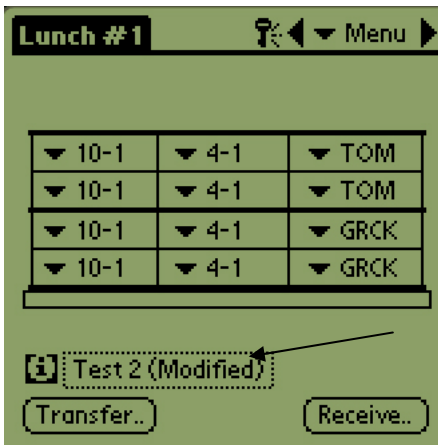


Step 2: Highlight the desired Preset by tapping on it in the Preset Manager. Tap on Load.

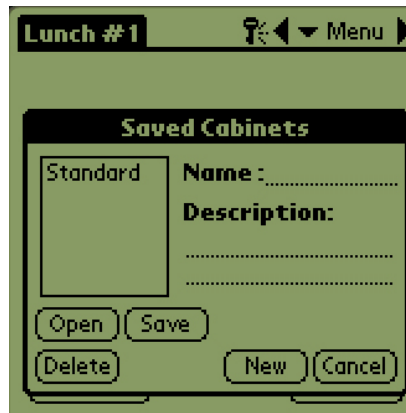


Step 3: All the menus established for the preset are loaded into the Palm and are ready to be beamed into the UHC-P.

6.3 Saving Cabinets with Software Version 2.10 or later



Step 1: When changes are made to the layout of the cabinet on the displayed graphic, the text by the i icon changes to modified. (Modified doesn't appear on the Symbol's screen.) See arrow. This serves as a prompt that the layout has been changed and it is possible to save the new configuration.



Step 2: Clicking on the i icon displays the Saved Cabinets dialog box. The buttons are described below.

Open: Loads highlighted cabinet configuration.

Delete: Eliminates highlighted cabinet configurations.

Save: Saves new cabinet configurations to the saved cabinet box. Hit only after cabinet configuration has been named.

New: Starts process of saving cabinet.

Cancel: Exits program or aborts saving cabinet operation.



Step 3: Clicking New produces a date in the Name field and in the box, which stores named cabinets.

NOTE: Button location and screen appearance differ between the Palm and Symbol units. The screens shown are of a Palm. The Symbol screen has similar graphics and the same buttons.



Step 4: Click in the desired field on the dialog box and click on the keyboard icon at the bottom (see arrow) to display a keyboard for name and description entry.

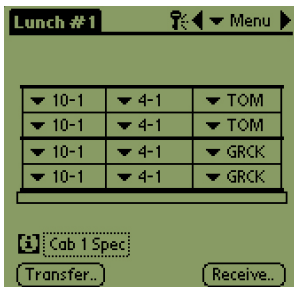


Step 5: Use the keyboard to enter a name. Indicate in the name if the saved configuration is for a Narrow or 2-slot cabinet when appropriate. Click Done when complete. Repeat the process to enter a description.

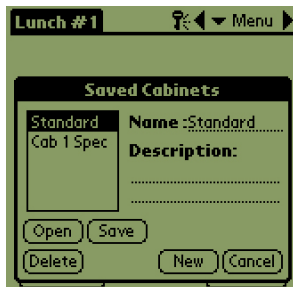


Step 6: Click Save and the date which appeared in Step 3 in the list of saved cabinets is changed to the entered name.

6.4 Loading Saved Cabinets with Version 2.10 Software



Step 1: From the menu screen, click the i icon.

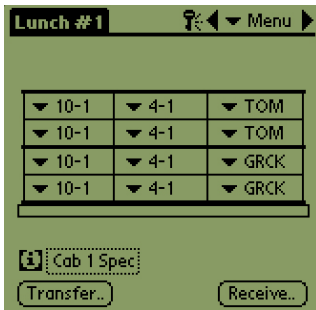


Step 2: Highlight the desired cabinet by clicking on the name. Click the Open button to load the chosen configuration.



Step 3: The chosen cabinet configuration is displayed.

6.5 Deleting Saved Cabinets with Version 2.10 Software



Step 1: From the menu screen, click the i icon.



Step 2: Highlight the saved cabinet to eliminate.



Step 3: A dialog asks are you sure you want to delete the cabinet. Click Yes if sure.



Step 4: The highlighted cabinet is removed from the saved cabinet list. Click cancel to leave the Saved Cabinet dialog box. Highlight and load a saved cabinet, if desired, by highlighting the name and clicking Open.

7 Fahrenheit to Celsius/ Language Choice



A password must be entered to change the temperature and language display. See Password Access in Chapter 5.

The temperature display and the language choice are both accessed from the Language button on the Setup Screen. **See figure 1.** The language or temperature change takes place immediately after selection.

Figure 1: Arrow points to the Language button, where the temperature display and the language displayed can be altered.

7.1 Changing Temperature Display



Step 1: Enter the password as detailed in Chapter 5 and then tap on the Language button and the Localization window is displayed. Check Celsius to change the temperature range displayed to Celsius.



Step 2: Tap the Quit button.



Step 3: Temperatures displayed when editing or adding menu items will be displayed in Celsius.

Repeat the steps, un-checking the Celsius box, to change the displayed temperature range to Fahrenheit.

7.2 Language Choice



Step 1: Enter the password as detailed in Chapter 5 and then tap the Language button and the Localization menu is displayed. Tap the triangle next to the chosen language. A pull-down menu lists available languages. Highlight the desired language by tapping on it.



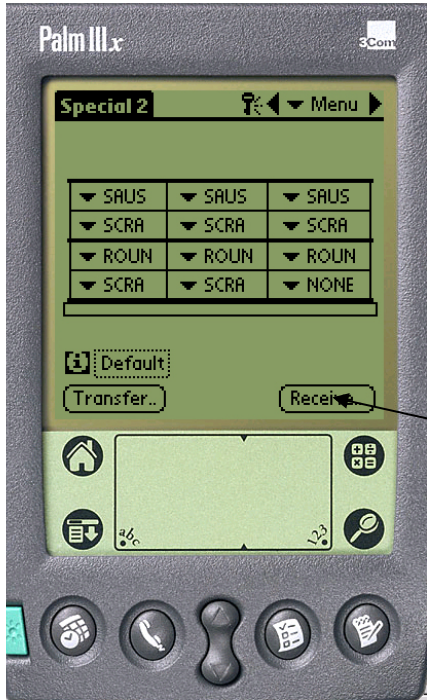
Step 2: With the chosen language displayed, tap Quit.



Step 3: The language displayed is immediately changed.

Repeat the steps to change to another language.

8 Uploading Cabinet Daily Activity



The cabinet records daily activity and this data should be uploaded to the PDA each day prior to turning the cabinet off. This can be done at anytime. Also, the cabinet prompts for this data to be uploaded when the UHC-P is put in the clean mode. See Page 3-2.

NOTE: Button location and screen appearance differ between the Palm and Symbol units. The screens shown are of a Palm. The Symbol screen has similar graphics and the same buttons.

Figure 1: To prepare the Palm Pilot to receive data from the UHC-P cabinet, tap the receive button.



Figure 2: To download a log of daily activity, tap the Rx logs button. A dialog box will display after the transfer is complete. Button names on later software versions may vary from what's shown above.

9 Acquiring and Loading Software for the Palm

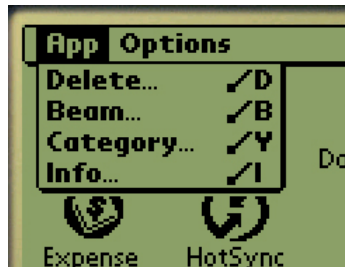
A Palm Pilot loaded with the UHC-P software is available from Frymaster as an accessory (Part # 826-2632 for domestic use, 826-2633 for international use). UHC-P software, which can be loaded on a Palm, is available at Frymaster's Web site, frymaster.com, and on the CD, which shipped with the fryer. A Palm operating system of 4.0 or higher is required to operate the software. See the Palm manual for instructions on installing, operating and deleting software from the Palm. Failed or outmoded UHC-P software must be removed from the Palm Pilot before new UHC-P software can be installed.

Instructions for checking the Operating System version are provided below for a Palm PDA. This information can also be found in the Palm manual.

9.1 Checking the Palm Operating System Version Number



Step 1: From a main screen, tap on the time display in the left top corner of the screen or the System icon in the bottom left. A drop-down menu is displayed.



Step 2: Tap on Info.

NOTE: Instructions for acquiring and downloading software for a Symbol PDA is covered in Chapter 10.



Step 3: From the displayed menu, tap Version in the bottom of the display. See arrow.



Step 4: The version number is shown at the top of the display. See arrow. Version 4.0 or higher is required to operate the UHC-P software.

NOTE: Operating system updates are available at Palm's Web site. However, not all Palm units can run the newer operating systems. Check your Palm manual and the Palm Web site, <http://www.palmsource.com/palmos/>.

9.2 Acquiring the UHC-P Software



Step 1: Navigate to Frymaster's Web site, Frymaster.com. On the home page, shown above, click on Partner Login.

Step 2: Click the McDonald's login.

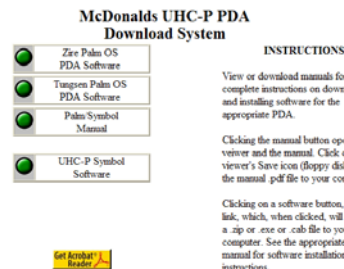
McDonalds PDA Download Login

Enter your User ID and Password.

User ID:

Password:

Send mail to webmaster@frymaster.com with questions or comments
Copyright © 2001 Frymaster, L.L.C. [Terms of Use](#)



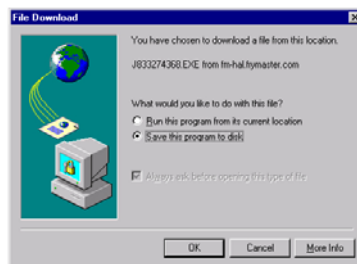
Step 3: Access to the software requires a User ID and a Password. Enter 9992 in the User ID field. Enter PSUHCKJ in the Password field.

Step 4: The download menu is displayed. Click the button for your Palm model, Zire or Tungsten.

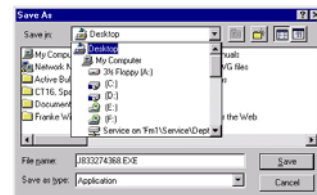
[click here to download the UHC files](#)

Send mail to webmaster@frymaster.com with questions or comments about this page
Copyright © 2002 Frymaster, L.L.C. [Terms of Use](#)

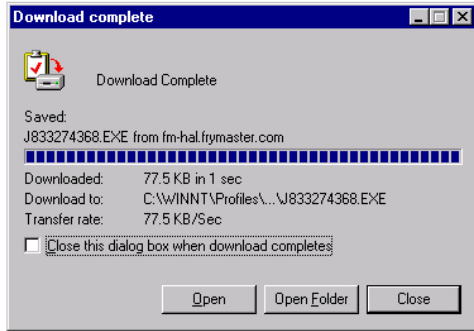
Step 5: A download page is displayed. Click the underlined text to begin the download of the files to the desktop of your computer.



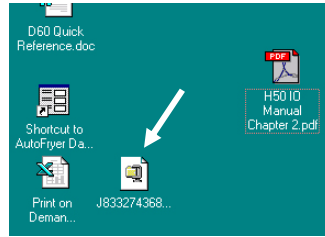
Step 6: A file download menu is displayed. Click save the program to disk.



Step 7: A Save As dialog box is displayed. In the pull-down menu shown, choose Desktop. Click Save. The file will be saved to your desktop.



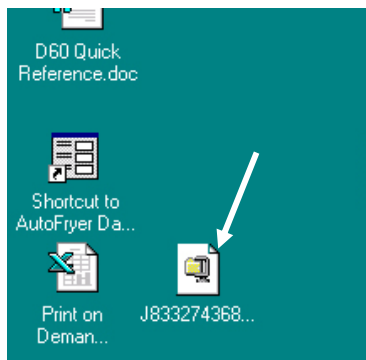
Step 8: A Download Complete dialog box is displayed. Click close.



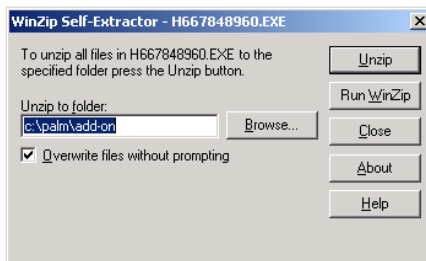
Step 9: A Zip file is now on the desktop of your computer. Installation of the software on the Palm is covered in Section 9.3.

9.3 Loading Software on Palm

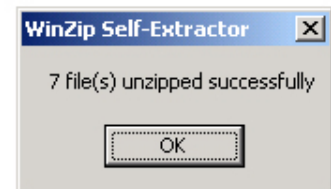
These instructions assume Palm desktop software is installed on your computer and a Palm with an operating system of 4.0 or higher is attached to the computer. Some familiarity with the Palm desktop software is also necessary. See the Palm manual for instructions on installing, operating and deleting software from the Palm. Failed or outmoded UHC-P software must be removed from the Palm Pilot before new UHC-P software can be installed.



Step 1: Double-click the Zipped UHC file saved to your desktop in Section 9.2. Or install the UHC-P software CD on your computer and copy the compressed UHC-P file to your desktop.

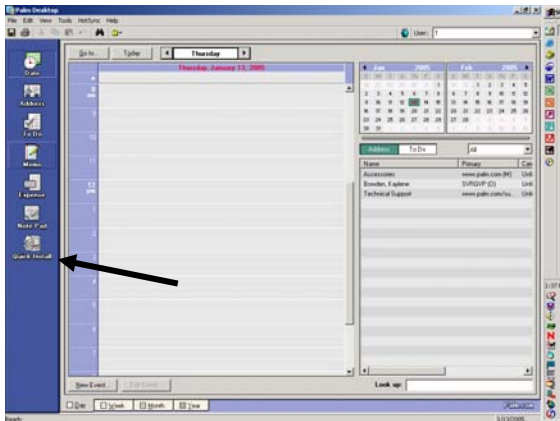


Step 2: *A self-extracting dialog box will be displayed. The Unzip to folder in the dialog box should show your Palm add-on folder as the site it will be saved. If not, click the Browse button and navigate to that folder. The Palm folder should be on your C drive. The Add-on folder is in the Palm folder. With the Unzip to folder showing the correct add-on folder, click Unzip.

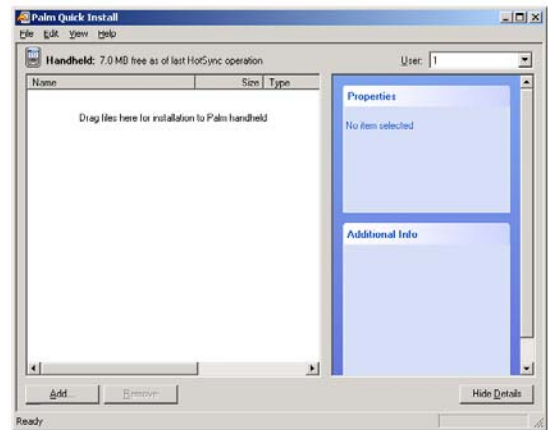


Step 3: A dialog box showing a successful extraction will be displayed.

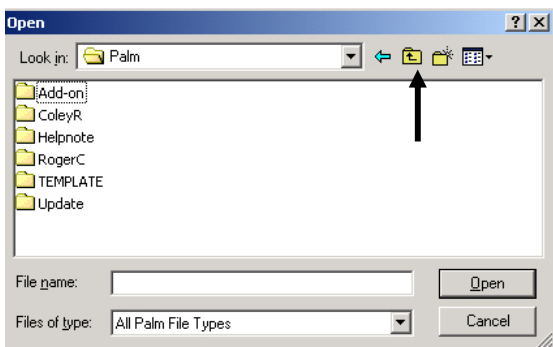
***NOTE:** Software for the Zire is placed in a Palm add-on folder in the C drive. Tungsten software goes to the Palm add-on folder in the Program Files folder. The UHC-P software is identical and can be used in either Palm model. If the software download is interchanged, it will be necessary to browse to the proper add-on folder for your Palm model.



Step 4: Open the Palm Desktop software by clicking on the icon on your computer's desktop and click the Quick Install button. See Arrow.



Step 5: The Install Tool is displayed. Click the Add button.



Step 6: The Palm's Add-on folder should open. If not, navigate to it by clicking the folder icon. See Arrow.

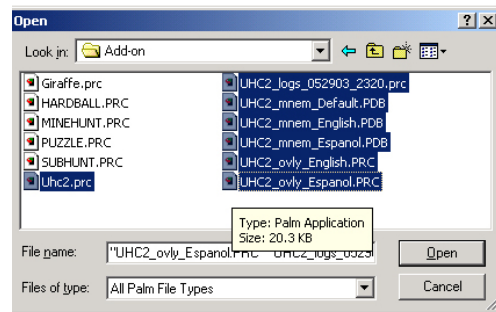
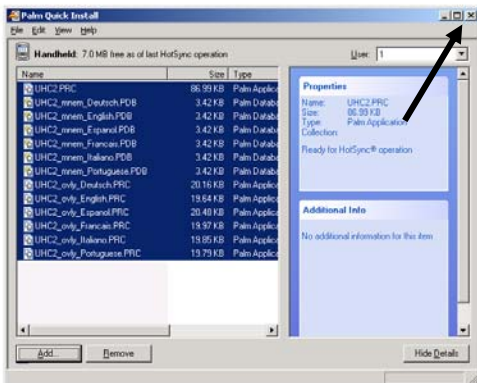


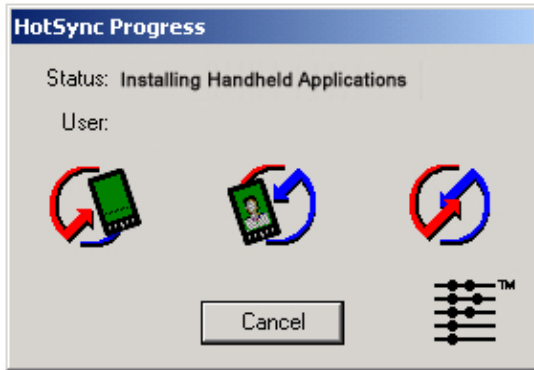
Figure 7: Double-click the Add-on folder and its contents are displayed. Hold down the control key and single-click all files in the folder with a UHC prefix. Click Open.



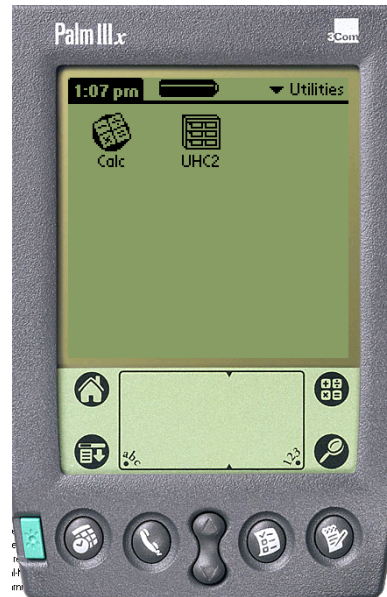
Step 8: The Install Tool is displayed with the highlighted UHC files. Close this box. See arrow.



Step 9: A new Install dialog box will be displayed, saying the files will be installed when a HotSync is performed. Click OK.



Step 10: Press the HotSync button on the Palm's cradle. The HotSync Progress dialog box is displayed. A HotSync successful transfer message will be displayed on the Palm's screen.



Step 11: Turn on the Palm. You will find the UHC icon in the Utilities menu. Click it.



Step 12: It is necessary to enter a password and change the language display from Default at the completion of the software transfer. See Chapter 5 for password entry and chapter 7 for language choice instructions.

Setting the software for 2 or 4-slot operation is covered in Chapter 4.

9.4 Beaming Palm Software Between Palms

The UHC-P software can be beamed, or transferred, from one Palm to another by merely placing the units head to head and choosing Beam from a drop down menu. Follow these steps to beam software between units. See the Palm manual for instructions on installing, operating and deleting software from the Palm. Failed or outmoded UHC-P software must be removed from the Palm Pilot before new UHC-P software can be installed.



Step 1: Place Palms head to head as shown. Delete any earlier version of the UHC-P software from the receiving Palm. In the unit which contains the UHC-P software, tap the time display (top left) or the System icon (bottom left).



Step 2: Highlight Beam in the pull-down menu that is displayed.



Step 3: The Beam dialog box is displayed. Highlight the UHC software. Tap the Beam button.



Step 4: The Palm will search for and find the adjacent Palm and beam the software and data. A success message will be displayed when the transfer is complete.



Step 5: Food items will not be visible in the Food Library. Change the password. (See Password Entry in Chapter 5.)

Tap the Language button and change the language choice from Default, which will populate the Food Library.

Setting the software for 2 or 4-slot operation is covered in Chapter 4.



NOTE: On some Palms with older operating systems, it may be necessary to beam the software with the UHC-P program open.

With the Palm Pilots arranged as described in Step 1 above and the UHC-P software displayed, follow these steps:

- Tap the Setup icon to reveal the menu bar. Also see Figure 1, Page 3-5.
- Tap View to reveal the drop-down menu shown at left.
- Tap Beam Settings.

The Palm receiving the program will beep during the process and it will be necessary to tap a Yes button during the process to continue the transfer on both Palms.

10 Acquiring and Loading Software for Symbol PDA

A Symbol-brand PDA with a Windows Pocket PC operating system is necessary to use the Windows-based UHC-P software. The cabinet software was developed for this particular PDA, which is in use in some McDonald's for inventory control and other duties. The software is not tested or supported on other devices. Software, which synchronizes the PDA to its host laptop or desktop computer, must be in place on the host computer to move the UHC-P software to the handheld PDA. See your Symbol manual for instructions on installing this synchronizing software.

UHC-P software for the Symbol is available on Frymaster's Web Site, frymaster.com.

10.1 Acquiring the UHC-P Software



Step 2: Click the McDonald's login.

Step 1: Navigate to Frymaster's Web site, Frymaster.com. On the home page, shown above, click on Partner Login.

McDonalds PDA Download Login

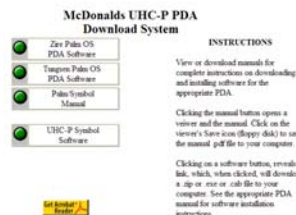
Enter your User ID and Password.

User ID:

Password:

Send mail to webmaster@frymaster.com with questions or comments.
Copyright © 2001 Frymaster, L.L.C. [Terms of Use](#)

Step 3: Access to the software requires a User ID and a Password. Enter 9992 in the User ID field. Enter PSUHCKJ in the Password field.



Step 4: The download menu is displayed. The software and a manual can be downloaded. Click the button to download the UHC-P Symbol files.

[click here to download the UHC files](#)

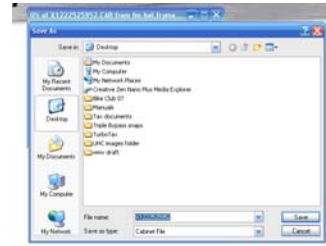
Return to Menu

nd mail to webmaster@frymaster.com with questions or comments about this
Copyright © 2002 Frymaster, L.L.C. [Terms of Use](#)

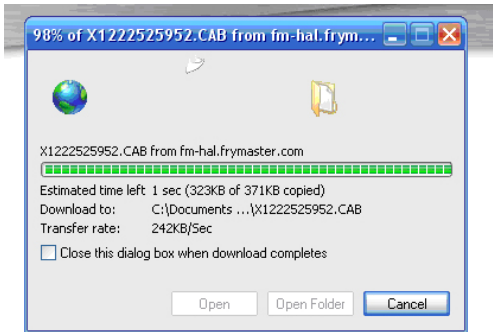
Step 5: A download page is displayed. Click the underlined text to begin the download of the files to the desktop of your computer.



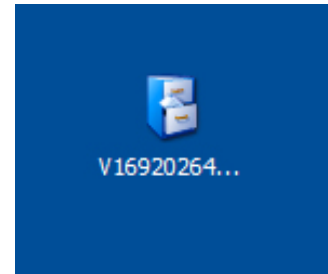
Step 6: A file download menu is displayed. Click the Save button.



Step 7: A Save As dialog box is displayed. In the pull-down menu shown, choose Desktop. Click Save. The file will be saved to your desktop.



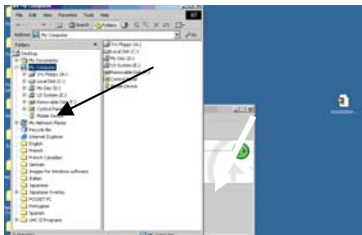
Step 8: The file is saved to your desktop.



Step 9: A .CAB file is now on the desktop of your computer. Installation of the software on the Symbol is covered in Section 10.2.

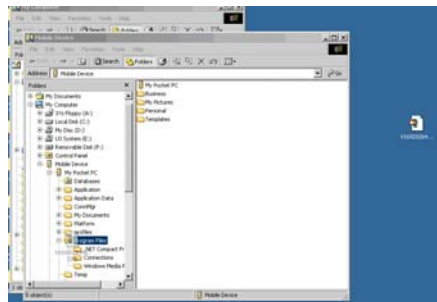
10.2 Loading Software on the Symbol

These instructions assume Symbol desktop software is installed on your computer and a Symbol with a Windows Pocket PC operating system is attached to the computer. Some familiarity with the Symbol synchronization desktop software is necessary. See the Symbol manual for instructions on installing, operating and deleting software from the Symbol. Failed or outmoded UHC-P software must be removed from the Symbol before new UHC-P software can be installed.

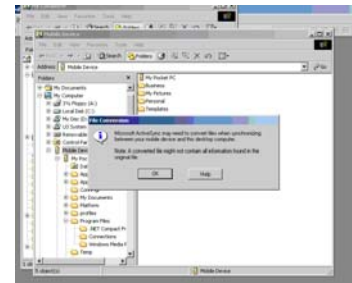


Step 1: Attach the Symbol to the host computer and navigate to the Mobile Device icon.

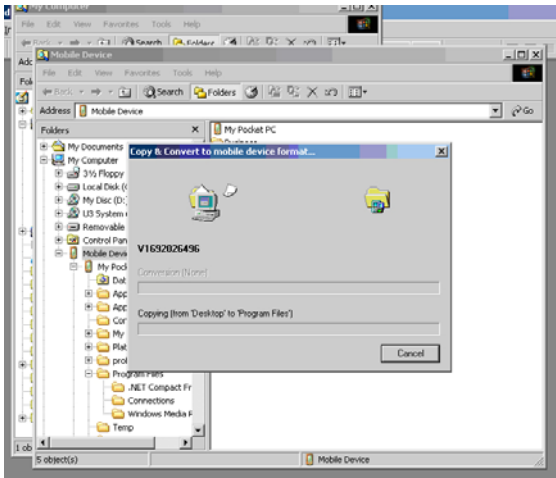
NOTE: Downloading/loading software for a Palm PDA is covered in Chapter 9.



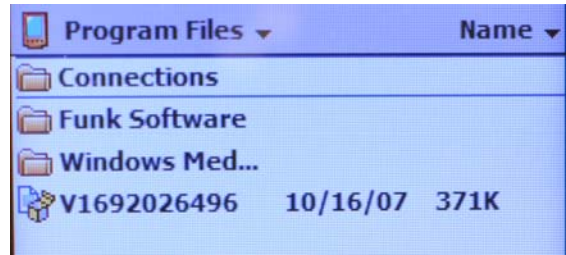
Step 2: Navigate to the Program Files folder under the Mobile Device icon.



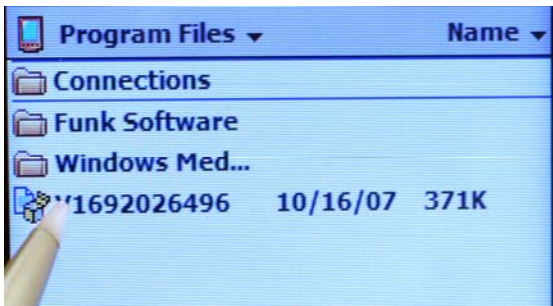
Step 3: Single-click and then drag the CAB icon on the host computer's desktop to the Program Files folder. An Active Synchronizer dialog box may appear. Click OK.



Step 4: A dialog box appears as the program moves to the Program Files folder



Step 5: In the Program Files folder on the Symbol, locate the compressed file.



Step 6: Use the stylus to double click the compressed file icon.

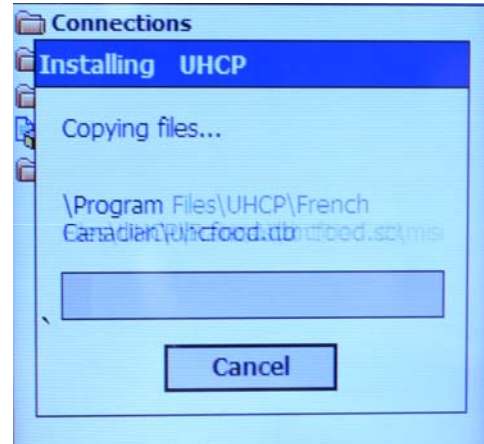
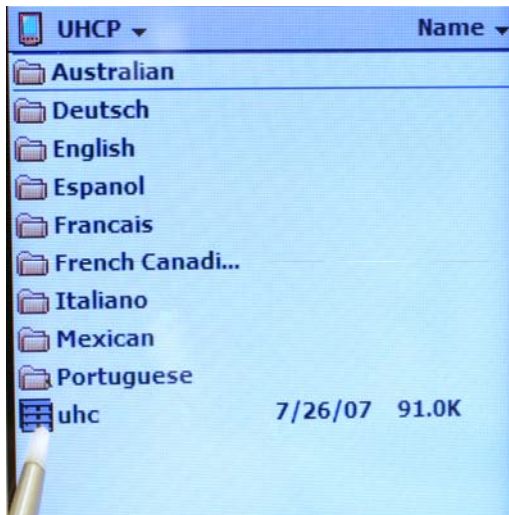
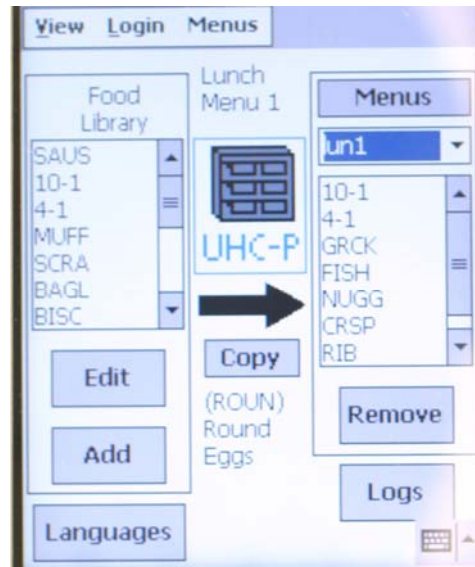


Figure 7: The software is loaded on the Symbol device.



Step 8: The icon for the UHC-P program and its related language/menu file folders are displayed. Tap the cabinet icon.
NOTE: The program can also be launched from the Program screen of the Symbol PDA.



Step 9: The cabinet software is launched

11 Appendices

Appendix A: Food Item Default Settings

| Food Item | Display Name | Meal Selection | Temperature Setpoint | Time (Min) |
|---|--------------|----------------|---|------------|
| Sausage | SAUS | BFST | 175°F (79°C) top plate 175°F (79°C) bottom plate | 60 |
| Round Eggs | ROUN | BFST | 175°F (79°C) top plate 175°F (79°C) bottom plate | 20 |
| Folded Eggs | FOLD | BFST | 175°F (79°C) top plate 175°F (79°C) bottom plate | 20 |
| Scrambled Eggs | SCRA | BFST | 175°F (79°C) top plate 175°F (79°C) bottom plate | 20 |
| Canadian Bacon | CBAC | BFST | 175°F (79°C) top plate 175°F (79°C) bottom plate | 30 |
| English Muffins | MUFF | BFST | 175°F (79°C) top plate 175°F (79°C) bottom plate | 20 |
| Biscuits | BISC | BFST | 175°F (79°C) top plate 175°F (79°C) bottom plate | 30 |
| Burritos | BURR | BFST | 175°F (79°C) top plate 175°F (79°C) bottom plate | 20 |
| Regular Patties | 10-1 | LNCH | 185°F (85°C) top plate 185°F (85°C) bottom plate | 15 |
| Quarter Pound Patties and Big Xtra! Patties | 4-1 | LNCH | 185°F (85°C) top plate 185°F (85°C) bottom plate | 15 |
| Grilled Chicken | NUGG | LNCH | 185°F (85°C) top plate 185°F (85°C) bottom plate | 60 |
| Fish | FISH | LNCH | 200°F (93°C) top plate 200°F (93°C) bottom plate | 30 |
| McChicken Patties | McCK | LNCH | 200°F (93°C) top plate 200°F (93°C) bottom plate | 30 |

Appendix B: Cleaning and Preventive Maintenance

After Each Use – Clean Trays/Racks

1. Remove all plastic and wire trays. Take trays/racks to the sink for cleaning.
2. Clean trays by washing in a hot *McD All-Purpose Super Concentrate (APSC) (HCS)* solution drawn through the sink proportioner or mix 0.3 fl. *McD APSC (HCS)* for each gallon of solution. Rinse trays/racks thoroughly under hot water.
3. Sanitize trays/racks by dipping in *McD Sink Sanitizer (HCS)* solution, (one pack per 10 gallons of water) or *McD Sanitizer (HCS)* solution (four packs per 10 gallons of water), for at least 1 minute. Remove from sanitizer solution and allow to air dry.

Daily – Clean Cabinet

1. At the end of the operating day, turn unit to Clean Mode. Follow steps on Page 3-2.

Note: Do not use *McD Sink Sanitizer (HCS)* to clean the exterior of the Universal Holding Cabinet-P.

2. Let the unit cool until the `SLOT CLN MODE` display dims. Use brush to remove any remaining buildup on the slot surface by pushing the particles out the opposite end of the cabinet.

Note: Use only the cabinet cleaning brush to clean the cabinet slots. Wire brushes, abrasive pads, or metal scrapers will permanently damage the surface of the cabinet slot.

Note: Do Not use any other cleaner than *McD (APSC)(HCS)*. Using other compounds may result in damage to control components.

3. With the cabinet cleaning brush, push all loose particles out the opposite end of the cabinet.
4. Use a wet, clean/sanitized towel and the cabinet-cleaning brush to clean each slot. Clean the bottom and top surface of each slot.
5. Wipe clean all exterior cabinet surfaces with a clean, sanitized towel that has been soaked in *McD ASPC (HCS)*.
6. Turn the unit off.

Weekly – Cabinet Slots

Calibrate the top and bottom plates in all four UHC slots by performing the following procedure with the slots clean, empty and at operating temperature for at least 30 minutes.

1. Press the temperature key (See Figure 1, Page 3-1) to ensure the slot is at setpoint.
2. Slide the Atkins sensor into a slot with the sensor facing upward to measure the top heater plate or down to measure the bottom heater plate. Move the sensor to the center of the plate. To get an accurate reading, the sensor must be within ± 1 inch (25mm) of the center of the plate.
3. Allow three minutes for the sensor to stabilize.
4. Read the temperature on the Atkins meter and compare to the reading from the cabinet, which is displayed by pressing the temperature key once for the top plate temperature and twice for the bottom plate. The displayed temperature should be within $\pm 5^\circ\text{F}$ ($\pm 3^\circ\text{C}$) of the meter. If the reading is out of tolerance, perform the following procedure.

Launch the UHC-P software on the Palm and follow these steps:



Step 1: Tap the left corner of the display in Setup or Menu mode. A menu bar is displayed.

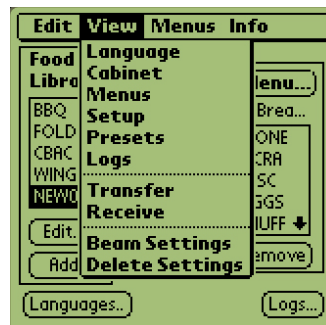
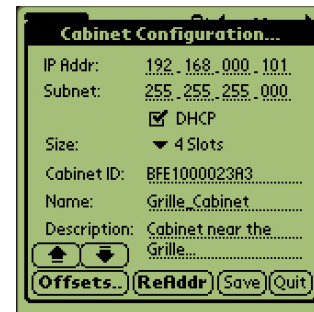
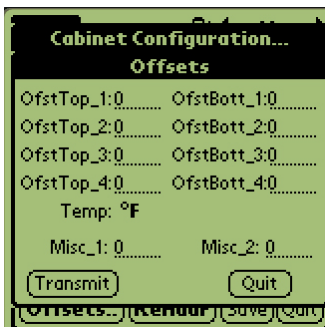


Figure 2: Tap View in the menu bar and tap Cabinet in the pull-down menu.



Step 3: The Cabinet Configuration menu is displayed. Tap the Offsets button in the left corner.



Step 4: The Cabinet Configuration Offset menu is displayed. The offset entry fields for the slots are arranged left to right and top to bottom. The miscellaneous fields in the bottom of the display are currently unused.

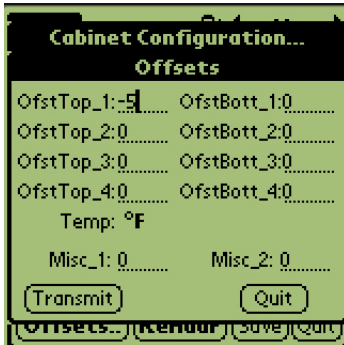


Step 5: Tap on the number line by the plate being offset and then the number icon (See Figure 1, Page 3-5) in the bottom right of the Palm display. Use the backspace key to erase number in the field and use the keypad to enter the desired offset. See examples in Table 1 (at right). Tap Done.

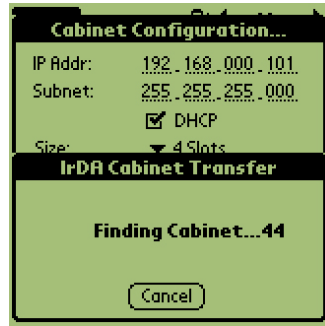
| Offset Entry Examples | | |
|-----------------------|-------|------------|
| Display | Meter | Correction |
| 150°F | 155°F | 5 |
| 150°F | 145°F | -5 |
| 66°C | 69°C | 3 |
| 66°C | 63°C | -3 |

Table 1

NOTE: Button location and screen appearance differ between the Palm and Symbol units. The screens shown are of a Palm. The Symbol screen has similar graphics and the same buttons.



Step 6: The entered offset is visible on the menu. In this case we offset the top slot's top heater plate -5°F . Adjust other slots as necessary.



Step 7: With the Palm horizontal and approximately one foot from the receiving lens on the cabinet, tap the Transmit button. The Transfer menu will be displayed. A message will be displayed when the transfer starts and when the transfer is complete.

Annually – Clean Air Exhaust Fans

CAUTION

Failure to disconnect the power at the wall power supply could result in serious injury or death. The cabinet power switch DOES NOT disconnect all incoming power to the cabinet. This service should only be performed by qualified service personnel.

CAUTION

Use caution when handling the cabinet. Each cabinet weighs over 200 pounds. Maneuvering/handling the unit should only be attempted with at least two people.

1. At the end of the operating day, place the unit in the CLEAN MODE.
2. Perform all daily maintenance requirements.
3. Disconnect power at the power source before beginning yearly maintenance. See caution above.
4. With a Phillips screwdriver, remove the two screws in each side panel. Set the screws aside.
5. Remove the side panels from the unit.
6. Gently brush any dust from the circuit boards on the side of the unit.

7. Gain access to the exhaust fans as follows:
 - a. If the cabinet is a single stand-alone unit or the top unit of a stacked arrangement, use a 5/16" socket driver to remove the four screws holding the cabinet top in place. Remove the cabinet top. Skip to step 10.
 - b. If the cabinet to be serviced is the bottom unit of a stacked arrangement, use a 5/16" socket driver and remove the four screws holding the equipment shelf in place. The screws are located on each side of the unit, near the top corners of the inner panel.
8. Use a 5/16" nut driver to remove the two #10-32 hex-head screws from each side of the front fascia.
8. Pull the front fascia out. It is not necessary to disconnect the switch wiring.
9. Remove wire and wire harnesses as needed to free the shelf. Mark each wire distinctly for re-assembly. Grab the edge of the shelf and pull straight out until the shelf engages the stops. Place the fascia on top of the shelf.
10. Wipe down the blades of the air exhaust fans with a clean cloth, dampened with *McD ASPC (HCS)*. Take care not to touch any electrical connections with the cloth. This procedure ensures efficient fan operation.
11. Reverse steps to reassemble the unit.

Appendix D: S.O.C. for the Universal Holding Cabinet-P (UHC-P)

The procedure for the Universal Holding Cabinet-P when used for **FRIED PRODUCTS** is similar to our current procedure. The only difference is that the fried product is held in a wire rack that goes in a crumb tray and placed in the pre-designated slot in the cabinet. No tray liners are required for these trays.

The procedure for the Universal Holding Cabinet-P when used for **GRILLED PRODUCTS** is also similar to our current procedure, except for:

- The product should **not** be drained when picked up from the grill.
- Use a tray liner for all grilled products.
- The product is stacked when placed in the proper tray. 10-to-1 and sausage patties can be stacked up to six high. Eggs (except scrambles), grilled chicken and 4-to-1 patties can be stacked up to three high (See Appendix G, Page 18-9).

The procedure for the Universal Holding Cabinet-P when used for **BISCUITS** is as follows:

- After the biscuits have been removed from the biscuit oven, remove the wrapper and open the cardboard box.
- Put a tray liner in the tray and slide the biscuits onto the liner. The biscuit trays can hold up to 30 frozen biscuits, 20 scratch biscuits or 20 muffins.

Appendix E: Production Charts

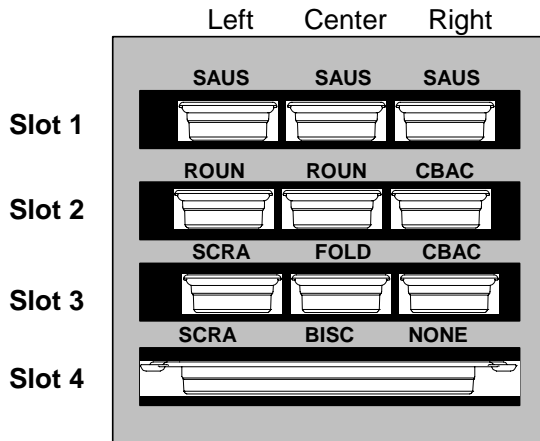
| Weekend(s) | Regular Menu | | | | | |
|-------------------------------|--------------|-------|----------|------|----------|----------|
| Recommend Tray Size/ Stack | 9/3 | 6/3 | 8/3 | 1/1 | 8/1 | 8/1 |
| Ultra High Volume | 18/6 | 12/3 | 15/3 | 1/1 | 10/1 | 14/1 |
| Units | Trays | Trays | # Pieces | Bags | # Pieces | # Pieces |
| Time period | 10:1 | 4:1 | GRCK | NUGG | McCk | Fish |

| Weekend(s) | Breakfast Menu | | | | | | | |
|-------------------------------|----------------|-------|-------|-------|-------|-------|-------|-------|
| Recommend Tray Size/ Stack | 30/1 | 12/3 | 6/3 | 6/1 | 6/3 | 15/3 | 5/1 | 9/1 |
| Ultra High Volume | 30/1 | 24/6 | 18/3 | 6/1 | 18/3 | 30/3 | 20/1 | 9/1 |
| Units | Trays | Trays | Trays | Trays | Trays | Trays | Trays | Trays |
| Time period | BISC | SAUS | FOLD | SCRA | ROUN | CBAC | MUFF | BURR |

Appendix F: UHC-P Typical Setups/Stacked Arrangements

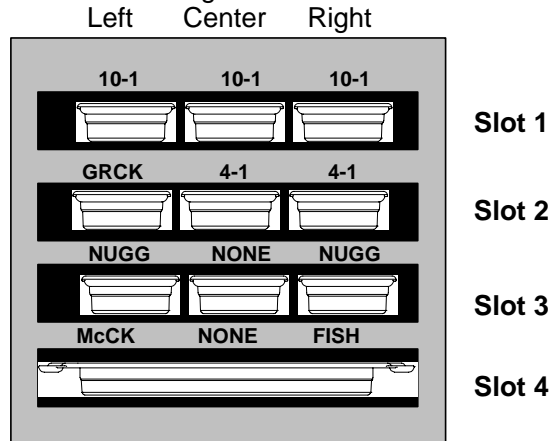
Breakfast Setup

Default Settings



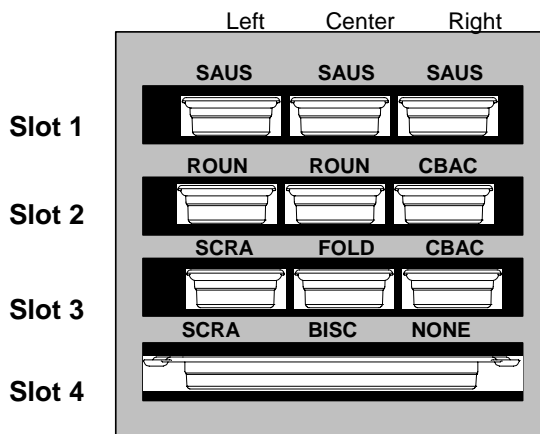
Lunch Setup

Default Settings

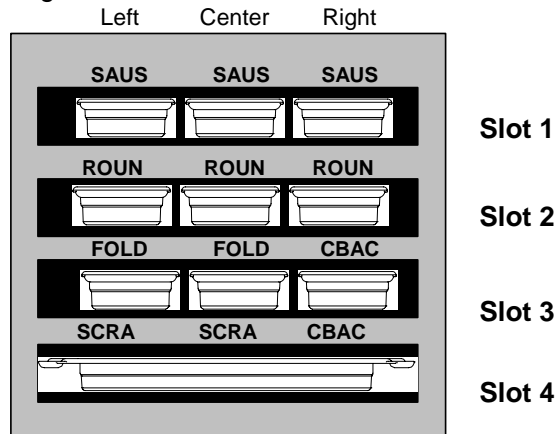


Typical Breakfast Setup

Left Cabinet*

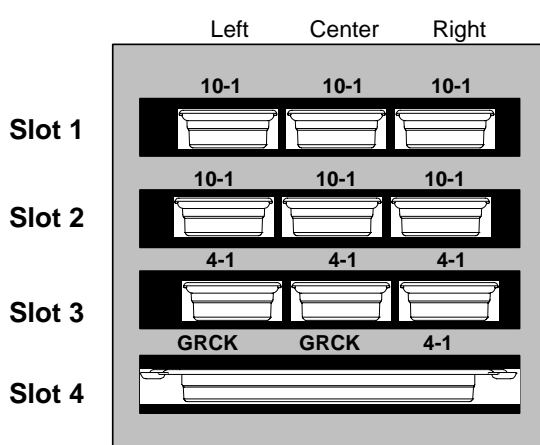


Right Cabinet

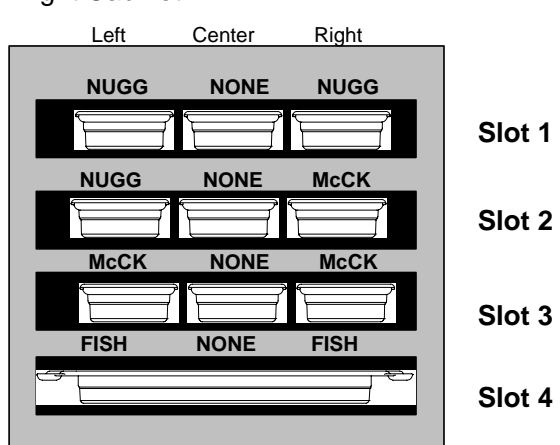


Typical Lunch Setup

Left Cabinet*



Right Cabinet

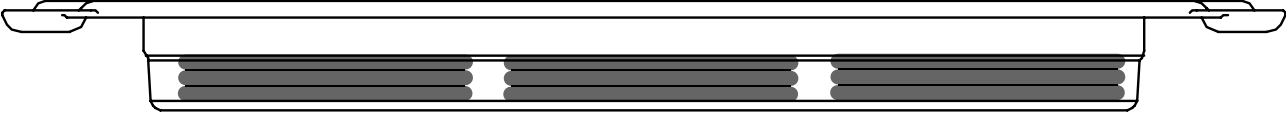


*Note: In this example, Biscuits (BISC) and Muffins (MUFF) occupy all three tray positions in a slot, therefore the middle tray should be set to the produce (BISC or MUFF) and the left and right tray positions should be set to NONE. If a tray position does not have a product, select NONE.

Appendix G: Stacked Arrangements

10-1 Meat Patties

Recommended Stack - Normal Volume 9/3



Recommended Stack - Ultra-High Volume 18/6





Frymaster, L.L.C., 8700 Line Avenue, PO Box 51000, Shreveport, Louisiana 71135-1000
Shipping Address: 8700 Line Avenue, Shreveport, Louisiana 71106

TEL 1-318-865-1711 FAX (Parts) 1-318-219-7140 FAX (Tech Support) 1-318-219-7135

PRINTED IN THE UNITED STATES

SERVICE HOTLINE
1-800-551-8633

Price: \$6.00
819-6002
MAR 09